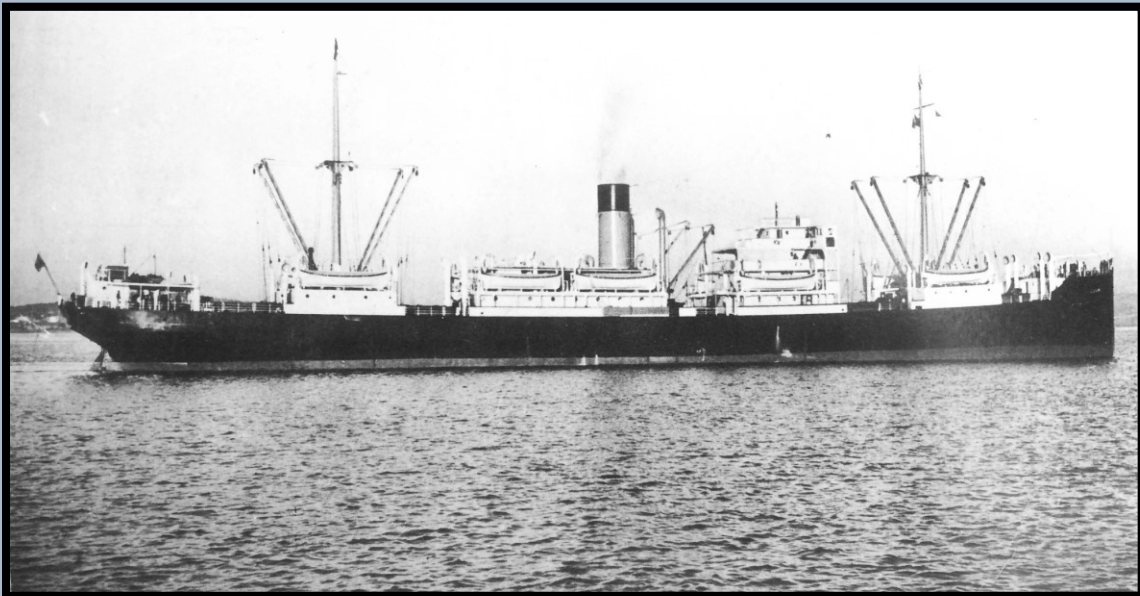


Ocean Joss

Ships in Focus

By Geoff Walker

“MV. Luxmi”



(Unknown copyright)

The classic - Bank Line's early motor ship “Luxmi”

The “**Luxmi**”, 4148 GRT, was the last of 3 sister motor ships (others “**Gujerat**” and “**Kathiawar**”) built for Bank Line in 1924 by Harland and Wolff, Govan. She had a service speed of 10 knots. These ships were built primarily for the Bank Line's India – Africa service designed to carry up to 400 deck passengers (housed in tweendecks, fitted with portholes for ventilation). Most Indian deck passengers were indentured laborers for the Natal Sugar Cane plantations. The ships also had accommodation midships for 12 First class passengers as well as for 20 Second class passengers aft.

The “**Luxmi**” remained in the Bank Line fleet for 37 years, before being sent for demolition at Hong Kong in 1961.

End

Disclaimer: Despite all reasonable attempts, it is not always possible to find the owner of the copyrights of these images in the Public Domain. Owners of these images should make themselves known by contacting me via oceanicsolutions@gmail.com and I will be pleased to give due accreditation or have them removed. No infringement of copyright is intended